

# Footpaths and tracks around the House

Upper Jenny's offers stunning views down the coast. Climb the stone steps to the right here if you want to follow the cliff-edge path east to the Crosses.



Duty Point Tower with panoramic views to the east and west



Cliff edge path round the headland

The Crosses — see below for how to get to them from the House



Jenny's



Lee Bay



This level track is an easy and popular 5-minute walk to the dramatic cliff-top lookout point of Jenny's

Tinkerbell (private)

Beach

Toilets



Lee Abbey

Farm (no access)

P

The Beacon

Toll point (free to guests)



North Lawn

Valley of Rocks

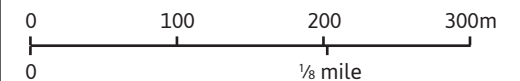


To get to the Crosses, go in the gate beside the Sports Hall, diagonally up the hill to the right, and through the kissing gate in the fence

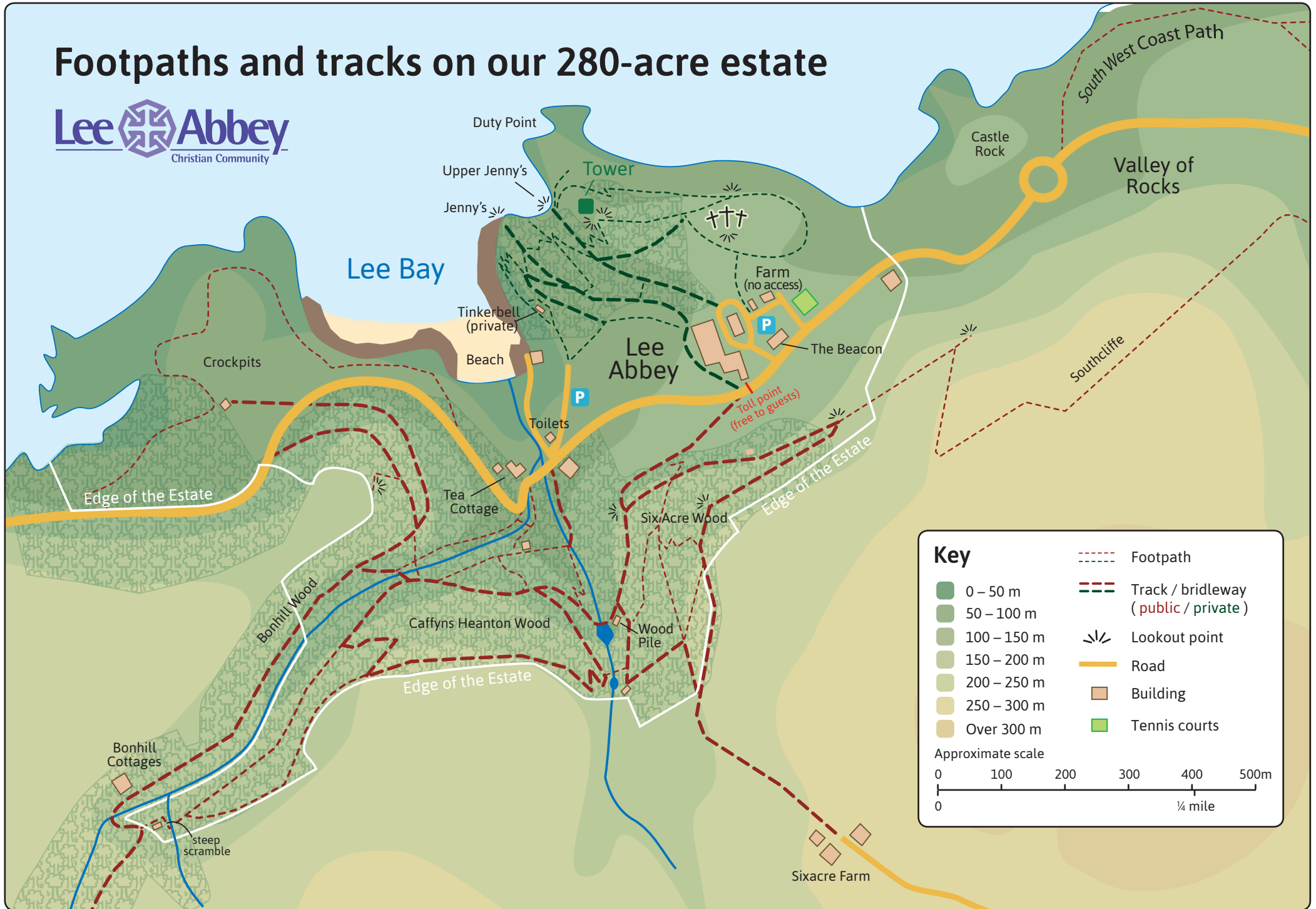
## Key

- 0 – 50 m
- 50 – 100 m
- 100 – 150 m
- Footpath
- Track / bridleway (public / private)
- Lookout point
- Road
- Tennis courts

Approximate scale



# Footpaths and tracks on our 280-acre estate



**Key**

- 0 – 50 m
- 50 – 100 m
- 100 – 150 m
- 150 – 200 m
- 200 – 250 m
- 250 – 300 m
- Over 300 m

- Footpath
- Track / bridleway (public / private)
- Lookout point
- Road
- Building
- Tennis courts

Approximate scale

0 100 200 300 400 500m

0 ¼ mile