

Encounter

July 2024 – July 2025

Retreats

Holidays

Christian community

Lee  Abbey
Christian Community

leeabbeydevon.org.uk

Lee Abbey Devon ... a very special place

Lee Abbey Devon is a residential Christian Community situated on a beautiful 280-acre estate in Exmoor National Park on the North Devon coast. Within our grounds there is a listed 120-bed house for holidays, retreats and groups, The Beacon Activity Centre, tea cottage, camp field, working farm, woodland and a beach.

Lee Abbey exists to enable those who visit – guests and resident Community – to encounter Jesus Christ through worship, teaching and ‘doing life together’. In this way lives, relationships, communities and the environment are transformed by the life of God.

Lee Abbey Devon has been described as a ‘thin place’ where the closeness of God can be experienced. Come and be renewed, refreshed and resourced as you find rest and nourishment in time away.

Our Values

ENCOUNTER

We are here to facilitate life-changing encounters with Jesus Christ, to hear his call and live it out as part of his church.

COMMUNITY

We encourage shared living with grace, humility and honesty, enabling all to flourish and grow.

HOSPITALITY

We share what we have, welcome with generosity and make space for the ‘other’.

SIMPLICITY

We keep ‘the main thing the main thing,’ wishing to ensure sustainability of people and the planet by living simply.

Contents

>Welcome from the Warden	3	Children and young people	12
Accommodation in the House & Beacon	4	The Beacon Activity Centre	14
Your stay with us	6	The year at a glance	15
Bringing a group to Lee Abbey	7	Programme of events	21
Self-Catering at Lee Abbey	8	Getting here	47
Things to do during your stay	10	Lee Abbey Camps	48



Dear Friends

Welcome to this Programme Brochure

Since June 1946 Lee Abbey has been welcoming people to come and enjoy this beautiful estate in Exmoor National Park and overlooking Lee Bay. People have come for many reasons: to holiday, to retreat, to attend a course, to explore their creative gifts, to invest in key relationships (family, friends or church), to seek God's healing or direction or to rest and be renewed, refreshed and resourced for life.

Jesus, in his earthly ministry, walked with people, shared meals, served in many practical and pastoral ways and taught with words that bring faith, hope and encounters with the love of God. The international Lee Abbey Community today seeks to do the same, empowered by the Holy Spirit.

We are thankful for our many partners who pray with us and come to administer the grace that God has entrusted to them in leading retreats and teaching. I hope, as you browse the variety of opportunities in this brochure that you will find at least one that inspires you. Of course, you are also welcome to just 'come and be' – making use of this place and the 'soul-space' it offers.

We are praying for all our guests as they come and look forward to welcoming you,

With blessing from Judy and me,

Gordon

Rev Gordon Crowther
Warden

Keep in touch

Visit our website:

leeabbeydevon.org.uk

Go through the programme and then follow the link to book your stay.

The website is the place to find all the latest news about what's on at Lee Abbey, as well as special offers and features.

Sign up online to receive regular email updates.

And remember – it's never been easier to book your stay through the website.

Alternatively call us on 01598 752621.

Follow us on Social Media

Follow us on Facebook, Instagram and Twitter.



@leeabbeydevon



@leeabbeydevon



@lee abbey devon

Lee Abbey
Christian Community

Lynton, North Devon
EX35 6JJ

Tel: 01598 752621

Email:

relax@leeabbey.org.uk

Online booking:
leeabbeydevon.org.uk

To book: leeabbeydevon.org.uk 01598 752621

Accommodation in the House and The Beacon

Lee Abbey Devon has a range of bedroom types including single, twin, double, triple and family rooms, the majority of which have sea or country views.



At Lee Abbey Devon, we can accommodate up to 150 people within the house and The Beacon Centre. In addition, we have a number of cots and Z-beds. Many of our rooms enjoy en-suite facilities (for which there is a surcharge) and all have a basin. There are guest bathrooms and toilets on each floor. Most rooms have a sea or country view and bed linen and towels are provided in each room. Within the House there is a tea and coffee making room on each floor with a kettle, fridge and microwave.

Pricing Structure

All prices given in this brochure are per person, per event in either a standard or an en-suite bedroom. Please see each event for its price, and please give your room type preference when booking.

Bursary Fund

If you would like to enable somebody else to come and stay at Lee Abbey, please ask about contributing to our Bursary Fund or make a donation during your stay here. Equally, if you would like to make use of our Bursary Fund, please contact us for details.

We offer a range of discounts all year round, supported by generous donations to our Bursary Fund:

All ordained ministers, spouses and dependents	10% off
Missionaries, spouses and dependents, on furlough from working overseas for a UK society	50% off
Lone parents bringing dependents	25% off

We also offer a wide range of other discounts, thanks to the generous support of Hopeswood (previously known as the Woodlands House of Prayer):

Those in formal training for ministry or missionary work	25% off
Students aged 17+ in full-time education	25% off
Those who are a main carer for a family member (whether or not the person for whom they provide care is also staying)	25% off
Those in receipt of UK benefits*	25% off
Refugees, and anyone who is a main supporter of a refugee	25% off

These reductions apply to UK residents only, and do not apply to **self-catering units** or when special rates are stated in the programme. Only one discount can be claimed at a time.

*UK benefits means: Child Tax Credit, Council Tax Benefit, Housing Benefit, Incapacity Benefit, Income Support, Jobseeker's Allowance, Pension Credit, Universal Credit, Working Tax Credit.



Single Parents

Lee Abbey is pleased to be able to offer a 25% discount to single parents bringing dependent children. This offer is available for any full priced conference in this brochure and children's normal discounts apply. Terms and conditions apply.

Children's Prices

Children aged four and under come FREE.

These other reductions also apply:

Ages 0–4	Free
Ages 5–7	25% of adult rate
Ages 8–11	35% of adult rate
Ages 12–16	50% of adult rate

Children aged 4 and under go **FREE**



The Beacon entrance



Preparing for the zipwire

All stays are
**FULLY
INCLUSIVE**

Your stay with us

At Lee Abbey Devon the price you pay is fully inclusive. Knowing that everything is included can help with your budgeting, especially if you come as a family or group. The price includes the following:

- 1 **Great accommodation and facilities, including a library, gift shop, book shop, estate walks and the beach!**
- 2 **All meals and drinks**
- 3 **Bed linen and towels in every room**
- 4 **Inspiring teaching and worship**
- 5 **Lively youth and children's ministry (seasonal – please ask)**
- 6 **Pastoral Helpers available to chat, listen and pray with you**
- 7 **Activities, games and sports facilities including sports hall, two tennis courts, sports field and Beacon activities when available (including archery, zip wire and indoor climbing)**

Come and Be!

We offer the Lee Abbey house and estate as a home for you to just 'come and be' any week or weekend that we are open. Come and enjoy the space and tranquillity in order to rest and recharge your batteries.

You could walk, play games, read, enjoy the beach, visit the local area, pray and spend time with God in this 'thin' place.

We pray that every guest encounters the transforming love of God in Jesus Christ and returns home refreshed, encouraged and inspired.

A typical day at Lee Abbey

A structured, bespoke programme is arranged for each week or weekend. There is a Welcome Team each week made up of Community members, who take time out of their daily roles to help you to make the most of your stay with us.

Each day is likely to include:

- Morning Worship with Community
- Buffet breakfast
- Teaching session with sung worship
- Morning refreshments
- Lunch, served by Community members
- Free afternoons
- Afternoon tea and cake
- Dinner, served by Community members
- An evening activity

**IMPORTANT
Booking
information**

When you are booking, please ensure you make us aware of any mobility issues and special dietary requirements that you have. We can then ensure you are given a room in a suitable place within the House with its many stairs and provide meals suitable for your diet.



Bringing a group to Lee Abbey Devon

Are you looking for a place to take your church or small group to for a weekend away? Lee Abbey Devon could be the place for you!

There is something remarkable about the way God brings unity and renewal to a church or group that spends time away together. A key part of Lee Abbey Devon's vision is to serve the Church by providing such an opportunity. We can cater for groups of up to 120 people in the House and a further 44 in The Beacon.

How to book your group

- 1** Decide on a date.
- 2** Phone us on 01598 752621 to check availability and request a Group Booking Pack.
- 3** Complete and return the Group Booking Form to us, along with the deposit.

Renew, Refresh, resource weekends

'Renew, Refresh, Resource' weekends are designed for everyone, whether Christian or exploring. Come on your own, as a couple, group, team, community or church, to this beautiful house and 280-acre estate on the edge of Exmoor. We invite you to encounter Jesus Christ and be transformed in every area of life. Through worship, teaching, prayer and the simple hospitality of our Community, find the space you need to be renewed, refreshed and resourced.

Day visitors

You are very welcome to visit for the day. Come and enjoy lunch, refreshments, and sessions if the programme permits. The cost is £20 pp including lunch. If you would like to stay for an evening meal, this will be charged at an extra £15 pp.

Group Rates for Renew, Refresh, Resource weekends 2024 – 2025

For groups including 10 adults or more (no other discounts apply)

Age	Sept – Oct 2024		Nov 24 – Feb 25		March – June 25	
	Standard	En-suite	Standard	En-suite	Standard	En-suite
17+	£165.00	£210.00	£145.00	£190.00	£165.00	£210.00
12-16	£95.00	£120.00	£85.00	£110.00	£95.00	£120.00
8-11	£66.50	£84.00	£59.50	£77.00	£66.50	£84.00
5-7	£47.50	£60.00	£42.50	£55.00	£47.50	£60.00
0-4	FREE	FREE	FREE	FREE	FREE	FREE

Self-Catering

Experience the beautiful Lee Abbey setting at your own pace and enjoy our programme with the freedom to come and go with your own self-catered space. All properties are provided with bed linen and indoor towels and fully equipped kitchens.



We have three self-catering options on the estate, set in some of the most stunning locations. They are available all year round, with booking dates matching the start and end of the House programmes. You are, of course, also free to do your own thing.

Please let the Bookings office know the extent to which you would like to participate in the programme, and in particular if you would like any young people and children within your group to join the Youth and Children sessions alongside the morning ministry session. You are welcome to book a self catering unit at a time when there is no House programme, but we will then need to charge VAT.

Beach Chalet

In a stunning spot, right on our own beach, the Beach Chalet is a fantastic base for extended families or groups of up to 12. Enjoy the beach and spectacular sunsets from your terrace, or watch the waves crash below as you eat breakfast. Open plan design with fully equipped kitchen for group catering including range hob, two ovens and dishwasher. The four bedrooms, three bathrooms, four toilets, laundry room, cot and highchairs ensure a comfortable and easy-going holiday for all. Parking for three cars at the door.

PRICE PER NIGHT	Beach Chalet	Lee Cabin	Tinkerbell
High Season: per night	£360	£170	£160
Mid Season: per night	£330	£155	£140
Low Season: per night	£245	£135	£125

High Season: July to September, all half terms, Christmas, New Year and Easter

Mid Season: March to June and October (excluding Easter and half terms)

Low Season: November to February (excluding Christmas and New Year)

All options are available for online booking.

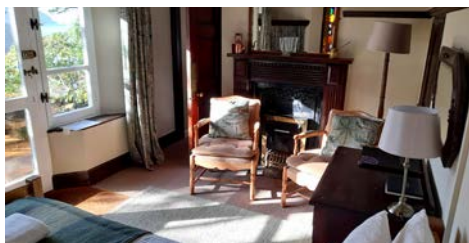




Tinkerbell

Tinkerbell

Built in the mid-19th Century as a summer retreat, Tinkerbell has been beautifully restored in 2023 and sits hidden in a delightfully secluded spot in the woods. With simply breathtaking views of the coast from the private decking area, this little gem is the perfect hide-away for an individual or couple to get away from the crowds. Double bed/sitting room, Lee Abbey grown oak-fitted kitchen, shower room and toilet. Car parking is 50m along a track from the cottage. Unsuitable for wheelchairs.



Lee Cabin

Lee Cabin

A bright, light wooden cabin with a magnificent view of the sea, sleeping four, perfect for a family to enjoy a relaxed and carefree holiday. Two bedrooms (1 double, 1 twin), Lee Cabin is just 250m from our beach with open grass and decking, and a few paces from our beautiful Tea Cottage and garden. A designated parking space up some steps. Unsuitable for wheelchairs.

Please note: Normally delightfully peaceful, during our Youth Camp weeks (22 July – 26 August) there will be more noise, fun and bustle from the nearby camp field.



Things to do during your stay



Explore the Estate

Ask at reception for an estate map and explore the miles of footpaths and bridleways. Take a woodland walk or climb to the highest points on the estate and take in the breathtaking view of the Valley of Rocks. Spend time on your own and watch the sunrise or sunset. Go for a dusk or night ramble – but don't forget to take a torch!

Feeling sporty

If you want to let off steam or pit your skills against a friend, you can take advantage of the many sports facilities here. There are two tennis courts, a five-a-side football pitch, an indoor sports hall suitable for badminton and table tennis or, for a more sedate game, play croquet on the North Lawn.

Star gazing

Exmoor National Park is designated the first International Dark Sky reserve in Europe. The area around the Lee Abbey estate boasts some of the darkest skies in the reserve. On a clear night the stars are simply stunning when many astronomical sights can be seen with the naked eye or through our telescopes and binoculars which can be borrowed from Reception.

Be creative

Whether your passion is for paint, pencil or camera, our stunning estate offers a rich and inspirational environment. You can let your creativity run riot: write a poem, get into Journalling, create beach art on the shoreline or bring your camera to capture the beauty of God's creation.



Mountain biking

Bring your bike and enjoy the many tracks that wind through the estate. Our hills and valleys offer challenges for all abilities. Or head further afield to explore beautiful Exmoor or the Tarka Trail running from Ilfracombe to Bideford and beyond.



Birdwatching

Lee Abbey estate's bird population is wide and varied, from woodland birds to sea birds. Keep an eye out for the many species of raptors including buzzards, sparrowhawks and peregrine falcons. Along the streams there have been sightings of dippers and herons and in the woodlands there are many interesting summer migrants. Listen out for the raven's call from the hillsides. Binoculars can be borrowed from Reception.



Walking

Whether you are an experienced rambler or just an ambler, the estate and surrounding countryside have something for you. Stroll along valley bottoms, beside rivers and streams or imagine yourself walking back in time as you explore nearby Lorna Doone country. Follow the coast path which runs through the estate to Hunters Inn and beyond. You'll be spoilt for choice. Exploring on foot will help you to switch off, relax and enjoy God's creation, notice flowers, wildlife and the sound of the wind or the ocean.



Quiet Spaces

Take a walk up to Jenny's or to the crosses on top of the hill, sit on a bench and look over the beautiful sea or watch the sunset. Visit the Chapel, or go to the Library and read a book, sit in an open space or in silent contemplation in a small poustinia. There are many 'Quiet Spaces' at Lee Abbey to enjoy an 'encounter' moment.

Children and young people

HOLIDAY WEEKS

School holiday weeks are specially designed so that children have an action-packed time finding out about Jesus. We offer:

THEMED WEEKS

- *Opportunities to discover more about God*
- *Adventurous activities for 8s and over*
- *Morning sessions for all children (shorter sessions for younger children not yet at school) so parents can have space to receive from God*
- *All-age worship services*

OUT OF SCHOOL HOLIDAYS

Children's work is always available during our Renew, Refresh, Resource weekends. We can occasionally offer school aged children a programme midweek during term time, and for some other weekends. Provision is subject to requests being given with plenty of notice, as our Youth and Children's team often lead mid-week school programmes at The Beacon, and therefore may not be available.

ADDITIONAL NEEDS

We welcome children with additional needs and are happy to discuss with parents and carers ways in which we can help all children feel welcome and included in the programmes we offer.

CRÈCHE

We can usually offer mid-week crèche facilities for children aged six months to five years so parents can join in with the morning programme.

- *Please let us know when you book, and ideally several weeks in advance, if you require childcare so that we can plan ahead to run the crèche as well as school programmes at The Beacon.*
- *There are two rooms dedicated to small children in the Preston Rooms. The Ark and The Pod have age-appropriate books, toys and games that can be accessed by families at any time during your stay*
- *Highchairs and child-friendly plates, bowls and cutlery are available in the dining room*

CHURCH WEEKENDS

Come with your whole church family knowing that the children will have their own tailor-made programme of events. We offer:

- *A programme which is especially designed for the age group of the children*
- *Morning activities for all children so that parents can have space to relax, unwind and receive from God*
- *Free time in the afternoon for you to 'do your own thing' and enjoy the area*
- *Creative ways of exploring faith and growing in understanding God's love*
- *Opportunities for building church community together*

Safeguarding

Please note that we take the issue of safeguarding very seriously at Lee Abbey. We have four safeguarding officers and a full policy that we commit to, to ensure, as much as possible, that everyone has a safe and enjoyable stay with us.

We take responsibility for your children when they are attending the Youth and Children sessions. However, once the session is over and children have been 'handed back', full responsibility for your children reverts to you.

The Beacon Activity Centre

Activities include indoor climbing, crate stack, zip wire, archery, low ropes, bush craft, orienteering and much more on our stunning 280-acre estate.

FOR A LIFE OF DISCOVERY

Bring your group of any age and see them discover a new-found confidence in themselves, in each other and in God, as our dedicated team lead and guide them in living life to the full. If you are looking for a unique venue:

- for your school residential or day out
- where you can complete your Duke of Edinburgh award
- for a church youth weekend
- for a team-building retreat for your staff
- a self-catered weekend

then give us a call on 01598 754206.

We can accommodate up to 44 people in The Beacon and we host only one group at a time. We are more than happy to either help you deliver your own programme or to create a programme and environment tailored to your needs.

For more information visit:

thebeaconactivitycentre.org.uk



"Thank you for all your care and hard work making it such a fun and happy week for the children! You've given so much encouragement and support which has really helped them all."



The year at a glance 2024 – 2025

This programme is correct at the time of going to print. However, additions and changes may need to be made, so for latest information, please see our website: www.leeabbeydevon.org.uk/visit/programme

You are very welcome to simply 'Come and Be' during any of our programmes, participating in as much or little of our activities as you wish.

JULY

1–5 July
PARABLES AND SIGNS OF THE KINGDOM

Martin Young

5–7 July
RENEW, REFRESH, RESOURCE
Lee Abbey Team

8–2 July
HOW TO BE AN EVERYDAY EVANGELIST IN EXILE
Chris Duffett

LIFE LANGUAGES
Jenni Sandford

15–21 July
WALK AND TALK
Helen & Graham Worsfold,
Joanna Mayers

LANDSCAPE PAINTING
Val and Mark Turner

22–26 July
House closed to guests

27 July – 5 August
THE FIELD Camp for 18–30s

29 July – 2 August
EMPOWERED!
The Order of Mission
and Mark Burgess

AUGUST

3–9 August
IS HE SERIOUS?
Paul Woolley

10–16 August
ENCOUNTER!
Festival week Bible Society and
Lee Abbey Team

17–23 August
TO LIVE IS CHRIST
Simon Guillebaud

24–30 August
OVERFLOWING WITH HOPE
Christopher Landau and
Felicity Lawson, ReSource

31 August – 8 September
House closed to guests

SEPTEMBER

13–15 September
RENEW, REFRESH, RESOURCE
Lee Abbey Team

16–20 September
LEE ABBEY FRIENDS WEEK
Lee Abbey Team

THEY SAW IT AND UNDERSTOOD:
Creative Retreat
Lynne Pugh

20–22 September
RENEW, REFRESH, RESOURCE
Lee Abbey Team

23–27 September
WALK AND TALK
Helen & Graham Worsfold,
Rob & Mary Wakeling

ENNEAGRAM 1
Catherine Park
and Joanna Pearson

27–29 September
RENEW, REFRESH, RESOURCE
Lee Abbey Team

30 September – 4 October
PLANTERS AND PIONEERS RETREAT
John McGinley, Tina Hodgett,
and Lee Abbey Team

OCTOBER

4–6 October
RENEW, REFRESH, RESOURCE
Lee Abbey Team

7–11 October
WALKING IN THE WAY OF JESUS
Ruth Hassall

11–13 October
RENEW, REFRESH, RESOURCE
Lee Abbey Team

KEEP FIT FOR MARRIAGE
Prepare/Enrich team

14–18 October
**REAL AND COLOURFUL:
ENCOUNTERING GOD IN THE SEASON OF AUTUMN**
Brian Draper

ESTATE WORKING PARTY
Lee Abbey Estate Team

ENNEAGRAM 2
Catherine Park
and Joanna Pearson

21–25 October
**A JOURNEY INTO MISSION –
FROM PAUL TO PRESENT**
Bible Society

TAPESTRY OF LIFE
Vittoria Hancock & Gretel White

25–27 October
RENEW, REFRESH, RESOURCE
Lee Abbey Team

28 October – 1 November

PARENTING FOR FAITH

Anna Hawken, BRF Ministries

WALKING WITH MOSES

Mark Ireland

NOVEMBER

1–3 November

RENEW, REFRESH, RESOURCE

Lee Abbey Team

WAITING FOR OUR HEART'S

DESIRE. Writers' Retreat

Ruth Leigh

7–10 November

House closed to guests

11–15 November

WALKING IN HIS STEPS

LICC

BOOK OF BLESSINGS

Val & Mark Turner

LIVING WITH LOSS

At the Beacon)

Andrea Corrie and Linda Sewell

15–17 November

TAG Weekend for 15s – 19s

South West Youth Ministries

18–22 November

NOTES FROM A GOOD PLACE

Dave Hopwood & Simeon Wood

25–29 November

WATCHING, WAITING,

HOPING

Bishop Emma Ineson

29 November – 1 December

RENEW, REFRESH, RESOURCE

– ADVENT CREATIVITY

Lee Abbey Team

DECEMBER

2–22 December

House closed to guests

23–28 December

CHRISTMAS CELEBRATION

Lee Abbey Team

30 December – 3 January

NEW YEAR CELEBRATION –

GOSPEL CONFIDENCE

Simon Guillebaud

JANUARY

3–19 January

House closed to guests

20–24 January

TREASURES OF THE KINGDOM

Silent Retreat

Michael Mitton

LIVING YARNS

Gretel White & Vittoria Hancock

24–26 January

RENEW, REFRESH, RESOURCE

Lee Abbey Team

27–31 January

PRAYING WITH ST PAUL

Graham Archer

31 January – 2 February

RENEW, REFRESH, RESOURCE

Lee Abbey Team

FEBRUARY

3–7 February

CHANGED FROM GLORY

INTO GLORY

David Rowe

PAINTING PROPHETICALLY

IN WORSHIP

Chris Duffett

7–9 February

RENEW, REFRESH, RESOURCE

Lee Abbey Team

10–14 February

INDIVIDUALLY GUIDED

RETREAT

Lee Abbey Team

14–16 February

RENEW, REFRESH, RESOURCE

Lee Abbey Team

17–21 February

LOVE YOUR LOCAL CHURCH:

EPHESIAN ADVENTURES

Richard & Nicola Moy

ESTATE WORKING PARTY:

TREE PLANTING

Lee Abbey Estate Team

21–27 February

RENEW, REFRESH, RESOURCE

Lee Abbey Team

24–28 February

House closed to guests

28 February – 2 March

RENEW, REFRESH, RESOURCE

Lee Abbey Team

MARCH

3–7 March

NEW LIFE IN CHRIST

Amy Boucher–Pye

7–9 March

RENEW, REFRESH, RESOURCE

Lee Abbey Team

9 March

LOCAL CHURCHES EVENING

Lee Abbey Team

10–14 March

House closed to guests

14–16 March

RENEW, REFRESH, RESOURCE

Lee Abbey Team

17–21 March

LAKE OF TEARS REVISITED

Kelvin Burke

17–21 March

THE JEWISH GOSPEL?

MEETING GOD IN MATTHEW

Elaine Storkey

17–21 March

30 PROBLEMS FOR ATHEISTS

Alan Storkey

21–23 March

RENEW, REFRESH, RESOURCE

Lee Abbey Team

24–28 March

MAKING A WORLD OF

DIFFERENCE

Dave & Anne Bookless

24–28 March

COME, BE, GO

Keith Foster

28–30 March

RENEW, REFRESH, RESOURCE

Lee Abbey Team

31 March – 4 April

KEEPING IN STEP WITH

THE SPIRIT

Paul & Becky Harcourt

THE UNFORCED RHYTHMS OF GRACE

Bev Shepherd

APRIL

4–6 April

RENEW, REFRESH, RESOURCE

Lee Abbey Team

7–11 April

MINISTERS IN TRAINING RETREAT

John and James Harding

11–15 April

FROM BETHANY TO JERUSALEM

Rupert & Sally Martin

11–15 April

THE BEAUTY OF THE CROSS CLAY RETREAT

Janey Petterson

16–21 April

HE IS RISEN!

Easter Celebration

Lee Abbey Team

21–25 April

THE CALL OF THE WILD, THE FEEL OF THE HOLY

Russ Parker and Michael Mitton

25–27 April

RENEW, REFRESH, RESOURCE

Lee Abbey Team

28 April – 1 May

House closed to Guests

MAY

2–4 May

RENEW, REFRESH, RESOURCE

Lee Abbey Team

5–9 May

WALK AND TALK

Graham & Helen Worsfold

ENNEAGRAM 1

Catherine Park
and Joanna Pearson

9–11 May

RENEW, REFRESH, RESOURCE

Lee Abbey Team

12–18 May

House closed to guests

19–23 May

HONESTY OVER SILENCE

Patrick Regan

BIRDS OF EXMOOR

Andrew Mann

23–25 May

RENEW, REFRESH, RESOURCE

Lee Abbey Team

26–30 May

FOLLOWING JESUS WITH MARY

Helen Collins

30 May – 1 June

RENEW, REFRESH, RESOURCE

Lee Abbey Team

JUNE

2–6 June

THE IN-BETWEEN TIME

Silent Retreat
Margaret Warne

ESTATE WORKING PARTY

Lee Abbey Team

6–8 June

RENEW, REFRESH, RESOURCE

Lee Abbey Team

9–12 June

House closed to guests

13–15 June

RENEW, REFRESH, RESOURCE

Lee Abbey Team

16–20 June

FAITH IN FOUR DIMENSIONS

Mark & Jonathan Tanner

16–20 June

BIRDS OF EXMOOR

Andrew Mann

20–22 June

RENEW, REFRESH, RESOURCE

Lee Abbey Team

23–27 June

HOLIDAY FOR THE SOUL

Brian Draper

30 June – 4 July

HIDE AND SEEK: THE DESIRE FOR PLAY AND WONDER

Andy Flanagan



Lee Abbey Friends



Lee Abbey Friends are an essential part of the Lee Abbey Movement and have provided vital prayer support for our work and ministry since the Lee Abbey Movement began in 1946. The Movement has now grown into an extensive and varied ministry throughout the UK, and includes Devon, London, and Small Missional Communities in Birmingham, Bristol and

Plymouth. Lee Abbey Friends are described as a 'fourth Lee Abbey Community'. Once a year Friends are invited to come and join with other Lee Abbey Friends for a week of teaching, sharing and being Community together. Please do ask about becoming a Lee Abbey Friend.

Declan Beales
Friends' Secretary



Associate Community

The Associate Community is made up of individuals and couples who give their time, effort and talents to support the Devon resident Community. God has faithfully brought some amazing people to serve willingly and tirelessly over the years. We would like to recruit more Associate Community members (ACs) to work with the Kitchen and House Teams.

The Associate Community support the resident Community by:

- Working up to eight hours a day as part of, and supporting, the House, Kitchen and Mission and Ministry teams
- Being around to chat to guests informally
- Taking part in the rota for serving tea and coffee to guests

- Taking a significant role in formal Prayer Ministry sessions and Night Prayer
- Helping to serve meals to guests
- Attending Community prayers

Please consider joining us

If you are interested in becoming an Associate Community member, please contact us at: martinswindlehurst@leeabbey.org.uk. We will send you a job description and an application form. Following receipt of your form you will be invited for a two day trial – for both you and us to discern whether becoming an AC is a right step for you.



Martin and Christine
Swindlehurst
Associate Community
Coordinators

Meet Stephen, Fiona and Brooke Crowther – Worship Leaders



Stephen, Fiona and 18 month-old Brooke and have been part of the Lee Abbey Community since early 2023. After spending the previous seven years as worship pastors at a church in London, they have felt really blessed to now be here in Devon with Stephen taking over the AV role, and both Stephen and Fiona leading worship and writing and recording worship songs. 'As part of the team we feel so blessed to get to worship with people from all across the UK and the world'. Their music enriches and enhances the worship of guests and community alike, so it's a reciprocated blessing!



Is God calling you to serve at Lee Abbey Devon?

At Lee Abbey Devon every Community member has a shared purpose as well as a shared living environment. Our day is structured around the Lee Abbey Rule of Life which includes regular prayer, worship and fellowship. We live our lives intentionally, learning to give more of ourselves to God by serving one another, the wider world and creation.

Our primary ministry is to welcome and serve people in such a way that they can encounter Jesus. We work hard together as a Community in different teams including House, Kitchen, Estate, Personnel, Bookings, Worship, Youth and Children, Pastoral, Marketing, Business, Finance, Maintenance and Administration. In addition, we serve meals to guests, lead morning and afternoon prayers, organise activities and games and, on 'Changeover' days help out practically wherever necessary.

Currently, our resident Community is smaller than in the past and includes many short-term (1 year) volunteers from all around the world. Thankfully, we are supported by wonderful Associate Community volunteers who come and help when needed, a dedicated group of local workers who work in key roles that require consistency and continuity, and by our prayerful Pastoral Helpers, Lee Abbey Friends and Trustees.

Come and join us! It is such a privilege to serve here as part of God's provision of rest and revitalisation for his people. We welcome those of all ages who are willing to be used by God to serve him and others, to grow in knowledge of him, to be challenged and reshaped, and to love him with all that they have and are. We don't promise it will be easy, but it will be amazing!



Parables and signs of the Kingdom

1–5 July (Mon–Fri) Martin Young

Jesus used parables and signs to express the good news of the Kingdom of Heaven. We want to spot them, understand them, experience them and even create them in our everyday lives. This week we'll be looking at the what, why and how of this creativity. Then we will explore how our imitation of Jesus can mean that our own lives of work, relationships and everyday being can also be kingdom oriented, and become unique and beautiful signs for others and our world.

Code 18A **£360 (£420 en-suite)**

Renew, Refresh, Resource

5–7 July (Fri–Sun) Lee Abbey Team

Our 'Renew, Refresh, Resource' weekends are designed for everyone; Christian or still exploring. Whether on your own or with your whole community, come to encounter Jesus Christ and be transformed in every area of your life. Through worship, teaching, prayer and the simple hospitality of our Community, step aside and find the space you need.

Code 19A **£180 (£225 en-suite)**



How to be an everyday evangelist in exile

8–12 July (Mon–Fri) Chris Duffett

Chris Duffett and The Light College Collective are leading a week on creative and Holy Spirit empowered ways to make an impact in and on your community. The vision of The Light College is to train, equip and connect pioneers and evangelists to go and make countless followers of Jesus. So, come and be inspired through hands-on workshops, practical sessions and a wealth of ideas and tools that will equip you to share the good news of Jesus in contemporary ways that connect with our modern culture.

Code 20A **£360 (£450 en-suite)**

Life languages

8–12 July (Mon–Fri) Jenni Sandford

Have you ever wondered why you finish a conversation feeling you didn't connect or misunderstood? Or why you internally process the way you do? It could be because you are a 'Responder' conversing with a 'Planner', or a 'Doer' with a 'Contemplative' and you're speaking very different languages. To build any healthy relationship everyone needs to feel seen, heard and understood. Through Life Languages™ we'll learn our own and others' communication styles so that we can connect at a heart level and discover how we may be listening to God and how he may be speaking to us.

Code 20B **£385 (en-suite £475)**

"The whole atmosphere of this place breathes the presence of God."



Walk and talk

15–21 July (Mon–Sun)

Helen & Graham Worsfold
and Bernard Lane

Come and join us to walk in this glorious part of Devon. Daily walks in a variety of areas will cover the stunningly dramatic coastline, river valleys and moors of Exmoor. We'll begin the day with a short time of prayer and worship, followed by a choice of three walks: long (9–12 miles), medium (6–8 miles) and short (4–5 miles). The geography of this beautiful landscape means most walks will have some steep ascent and descent. Bring good walking footwear, appropriate clothing, rain gear and a small rucksack and water bottle for your packed lunch. We may need to share lifts to reach the walk start and end points.

Code 22A **£600 (£735 en-suite)**

Landscape painting

15–21 July (Mon–Sun) Val and Mark Turner

As we continue to engage in prayer with the changing realities of this world, this week is an oasis opportunity to worship while we observe and record what we see within the utter beauty of the North Devon landscape. Refocus your perspective on the Sovereign God of Creation who knows what is beyond the horizon and shows us how to engage with the foreground – integrating all that is into meaningful composition. Please bring your own preferred art materials. Limited to 20 places.

Code 22B **£540 (£675 en-suite)**



22–26 July – House closed to guests

AUGUST

The Field Camp

27 July – 5 August 2024 (Sat–Mon)

The Field is a Christian camping community for 18–30s spread over nine days in a stunningly beautiful location. It's a unique place for anyone – whether single, a couple or family – to come and be, to explore God's great love, to meet new people and to be creative. Or simply step out of the busyness of life. We will welcome and cook for you, entertain and worship with you, offer inspiration, peace or maybe a challenge. We will pray and laugh with you, and stand beside you whatever stage of the faith journey you're at. Sound good? It is! Join us!

The Field **£250 pp (or £35 per day)**

Empowered!

**29 July – 2 August (Mon–Fri) Mark Burgess,
The Order of Mission**

What does it mean to be empowered? Over a week of power-packed, practical talks, Mark Burgess leads us towards empowered prayer and discipleship and the freedom to make a true and lasting transformation in the power of the Holy Spirit wherever we find ourselves. As the newly appointed Senior Guardian of The Order of Mission, and founder of Oikos Ministries in Peru, Mark brings his experience in overseas mission in Peru and the Amazon jungle and his passion for missional discipleship, cultural diversity and empowering the poor.

Code 25A £360 (£450 en-suite)

Is he serious?

3–9 August (Sat–Fri) Paul Woolley

Jesus said some things that are difficult to understand: “Go and sell all that you have and give to the poor.” “If you don’t hate your family, you can’t be my disciple.” “Follow me, and let the dead bury their own dead.” What should we make of these hard to hear phrases from Jesus, and how do the challenges he poses relate to our everyday lives in 2024? The good news is that there is Good News! We can discover God’s grace and power as we learn to really hear Jesus. Come ready to be challenged, inspired, and equipped to follow Jesus in all of life, right where you are.

Code 26A £540 (£675 en-suite)



*"I can't wait to come back!
I'm telling all my friends
about this place!"*



Summer Encounter!

10–16 August Lee Abbey Team

Come and dwell in the whole Lee Abbey estate for these joy-filled days of teaching, worship, and young people’s activities for all. Lee Abbey is all about Encounter – with God and with each other. Our new site-wide programme is paced for you to rest in God’s presence and relax on our stunning beach and estate, meeting for meals, Big Tent worship, lively, thought-provoking teaching streams across the site and all-age fun. Choose your accommodation to suit your needs; the comfort of the house or family and group-friendly bunk rooms at the Beacon. See our website for more details of this exciting new venture.

Code 27A £360 Beacon £540 House
(£675 en-suite) Big discounts for under 18s and full-time students

To live is Christ

17–23 August (Sat–Fri) Simon Guillebaud

Paul’s letter to the Philippians is full of challenges and encouragements for each of us in whatever situation we find ourselves. Come along to be inspired and stirred to live lives of passionate surrender and joy.

Code 28A £540 (£675 en-suite)

Overflowing with hope

24–30 August (Sat–Fri)
Christopher Landau and Felicity Lawson –
ReSource

Inspired by Romans 15:13, during this week we’ll draw closer to the God of hope and be reminded what it is to be filled with a unique joy and peace as we trust in him. There will be time to reflect on those challenges in our own lives, or the church, that can undermine our ability to trust God. From a place of honesty, we will seek the restorative power of the Holy Spirit, so that we might return to our everyday lives or ministry truly overflowing with hope.

Code 29A £540 (£675 en-suite)

*31 August – 8 September
House closed to guests*

SEPTEMBER

Renew, Refresh, Resource

13–15 September (Fri–Sun)
Lee Abbey Team

Our ‘Renew, Refresh, Resource’ weekends are designed for everyone; Christian or still exploring. Whether on your own or with your whole community, come to encounter Jesus Christ and be transformed in every area of your life. Through worship, teaching, prayer and the simple hospitality of our Community, step aside and find the space you need.

Code 32A £190 (£240 en-suite)



Lee Abbey Friends of Jesus

16–20 September (Mon–Fri)

Lee Abbey Team

This is a time for all of the Friends of Lee Abbey, and past members of Community, to gather together. We have an exciting programme planned with the opportunity to hear stories of the past two years and to share our hopes for the future. There will be input from speakers from across the Movement, plus a chance to hear updates from Lee Abbey Devon and London and the SMCs (Small Missional Communities). There will also be plenty of time for fellowship, meeting up with existing Friends and making new Friends.

Code 33A

£340 (£440 en-suite)

They saw it and they understood!

16–20 September (Mon–Fri) Lynne Pugh

There are many occasions in the Bible where something that can be seen is used as a teaching tool ... think of Jeremiah being sent to watch the potter! Jesus very often used the things around him to help people understand what he was saying. As a Christian artist I often see people have an 'Aha moment' as they hear God's word and see something I'm painting inspired by the same passage. This week we will use a biblical 'visual aid' to inspire some artwork each day. It will be suitable for beginners and experts alike.

Code 33B

£400 (£500 en-suite)

Renew, Refresh, Resource

20–22 Sept (Fri–Sun) Lee Abbey Team

Please see RRR 13–15 September for more details.

Code 34A

£190 (£240 en-suite)



"The sense of the Holy Spirit moving among guests and Community was tangible."



Walk and Talk

23–27 September (Mon–Fri)

**Helen & Graham Worsfold,
Mary & Rob Wakeling**

Come and join us to walk in this glorious part of Devon. Daily walks in a variety of areas will cover the stunningly dramatic coastline, river valleys and moors of Exmoor. We'll begin the day with a short time of prayer and worship, followed by a choice of three walks: long (9–12 miles), medium (6–8 miles) and short (4–5 miles). The geography of this beautiful landscape means most walks will have some steep ascent and descent. Bring good walking footwear, appropriate clothing, rain gear and a small rucksack and water bottle for your packed lunch. We may need to share lifts to reach the walk start and end points.

Code 35A £450 (£550 en-suite)

Enneagram 1

23–27 September (Mon–Fri)

Catherine Park and Joanna Pearson

Enneagram (Greek for '9 points') describes nine personalities. The Enneagram helps us to look at ourselves honestly, safe in the love of God, to see why we think or act in a particular way. It is a powerful tool for spiritual and personal growth. This course will have more teaching slots than is normal in a Lee Abbey day and is limited to 18 places.

Code 35B £450 (£550 en-suite)

Renew, Refresh, Resource

27–29 September (Fri–Sun)

Lee Abbey Team

Lee Abbey's 'Renew, Refresh, Resource' weekends are designed for everyone; Christian or still exploring. Whether on your own or with your whole community, come and encounter Jesus Christ and be transformed in every area of your life. Through worship, teaching, prayer and the simple hospitality of our Community, step aside and find the space you need.

Code 36A £190 (£240 en-suite)

Planters and pioneers retreat

30 September – 4 October (Mon–Fri)

**John McGinley, Tina Hodgett
and Lee Abbey Team**

The life of pioneering with God in a new context or leading a team to establish a new church community, is one of the most challenging roles within Christian ministry today. This retreat is an opportunity for church pioneers and planters to take time out in an environment of peace, faith and stunning countryside to share and reflect with others with a similar calling. Times of corporate worship, teaching and prayer, plus opportunities to pray and seek God's word and plans for yourself, will provide the vital time necessary to renew yourself in the Lord's love and give attention to your soul. The week is hosted jointly by the Lee Abbey team and The Gregory Centre for Church Multiplication (CCX), with experienced leaders and planters including John McGinley.

Code 37A £380 (£480 en-suite)

OCTOBER

Renew, Refresh, Resource**4–6 October (Fri–Sun) Lee Abbey Team**

Lee Abbey's 'Renew, Refresh, Resource' weekends are designed for everyone; Christian or still exploring. Whether on your own or with your whole community, come and encounter Jesus Christ and be transformed in every area of your life. Through worship, teaching, prayer and the simple hospitality of our Community, step aside and find the space you need.

Code 36A £190 (£240 en-suite)**Walking in the way of Jesus****7–11 October (Mon–Fri) Ruth Hassall**

It's been said that 'The church in the West has largely forgotten the art of disciple making and has largely reduced it to an intellectual assimilation of theological ideas' (Alan Hirsch). Come and explore what it means to be a disciple of Jesus in the 21st century, as we seek to engage meaningfully with spiritual practices that enable us to hear afresh his call to be with him, to become more like him and move our ideas from our heads to a life lived with him.

Code 39A £380 (£480 en-suite)**Renew, Refresh, Resource****11–13 Oct (Fri–Sun) Lee Abbey Team**

Please see RRR 4–6 October for more details.

Code 40A £190 (£240 en-suite)**Keep fit for marriage****11–13 October (Fri–Sun)****Prepare/Enrich**

Whether you are a pre-married couple or married for years, take some time away to build and strengthen your relationship in an idyllic location. We provide a questionnaire beforehand to help you assess where you are currently. Working only with your partner (unless you choose to share experiences with others) talks and exercises will encourage growth in communication and other key aspects in relating to each other. Please complete the online questionnaire before the course start date. (£30 charge payable direct to Prepare/Enrich).

See www.prepare-enrich.com for more information. Limited to 20 places.

No facility for children.

Code 40B £190 (£240 en-suite)

Real and colourful, fruitful and whole: encountering God in the season of autumn

14–18 October (Mon–Fri) **Brian Draper**

Through a mix of guided reflections, teaching and contemplative practice, we'll explore together how one of the most soulfully evocative of all the seasons can help us to encounter the Creator afresh, within its 'hidden wholeness' – in the leaf-fall and the fruitfulness, the dark and the light, the letting go and the gathering up. It'll be a time to savour the spirituality both of hunkering down and getting outside to savour the colours and textures of Creation! And as we do so, an opportunity to reflect on, and embrace, the season we're in personally. Come not just to welcome autumn, then, but to be part of its glorious wholeness!

Code 41A **£380 (£480 en-suite)**

Estate Working Party

14–18 October (Mon–Fri)

Lee Abbey Estate Team

If you're fit and able, we'd love you to join our team doing practical tasks on our stunning estate this week. You'll work roughly five hours each day but get a reduced rate along with the late afternoons and evenings free for a satisfying rest. Choose between: woodland work, fences and estate tasks, log splitting and clearing and gardening. Places on each stream are limited. Appropriate outdoor PPE is provided, but please bring suitable clothing, stout footwear and waterproofs. If you are unsure whether you could manage this sort of work, please phone before booking.

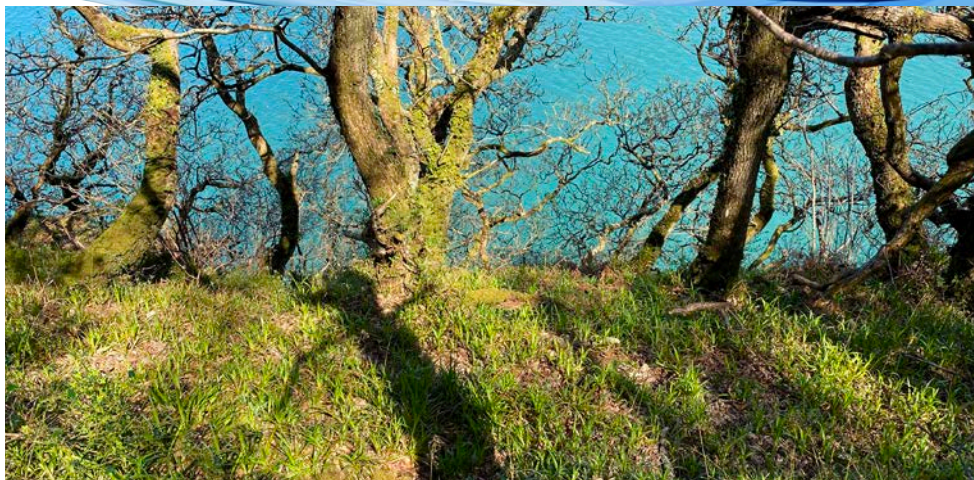
Code 41B **£300 (£400 en-suite)**

Meet Estie Van Niekerk – Catering Manager



Estie says she is from 'one of the most beautiful countries in the world where the sun shines bright with vast, different landscapes and where two oceans meet!' (If you guessed South Africa, well done!) She came to the UK in 2019, leaving her family and friends to follow the call that God has on her life. But life is not always a smooth ride and takes unexpected turns

and that was definitely the case for Estie. In 2022 she came as guest to Lee Abbey and after great conversations with people here she felt the call that led her to the UK became a reality again. After lots of prayer she applied and joined community in 2023. She joined the kitchen team, becoming Catering Manager in April 2024 and through that she's found God has taught her so much. 'He has taught me what it means to love other people; that his provision is far greater than we know and that his love for me is endless'. She is looking forward to what else he is going to teach her during her three years at Lee Abbey – and continuing to devise and plan delicious meals for guests and community.



Enneagram 2

14–18 October (Mon–Fri)

Catherine Park and Joanna Pearson

For those who already have a basic knowledge of the Enneagram and know their Type, we invite you to continue your journey into the Enneagram. We will be looking at the things that hinder and help us on our spiritual path. This course will have more teaching slots than is normal in a Lee Abbey day and is limited to 18 places.

Code 41C

£450 (£550 en-suite)

A journey to mission – from Paul to present

21–25 October (Mon–Fri)

Bible Society

As we all wrestle with how to play our part in God's big mission for the world, join Bible Society to set aside time to discover what made Paul such an effective missionary for Christ. Alongside this, drawing on Bible Society's extensive missional research, and with contributions from speakers and guests across their community, you'll map the landscape of mission together, in these changing times, with desire and heart.

Code 43A

£380 (£480 en-suite)



Tapestry of life

21–25 October (Mon–Fri)

Vittoria Hancock and Gretel White

This is a retreat for anyone interested in tapestry, embroidery or handicrafts. Whether you are a beginner at stitching, or an expert, come and join us as we spend time exploring the threads that make up our lives. You can unwind in the company of other crafters, and if you want, there will be the opportunity to learn two new skills. Materials can be provided for a small extra cost. Limited to 18 places.

Code 43B

£450 (£550 en-suite)

Renew, Refresh, Resource

25–27 October (Fri–Sun) Lee Abbey Team

Lee Abbey's 'Renew, Refresh, Resource' weekends are designed for everyone; Christian or still exploring. Whether on your own or with your whole community, come and encounter Jesus Christ and be transformed in every area of your life. Through worship, teaching, prayer and the simple hospitality of our Community, step aside and find the space you need.

Code 44A

£190 (£240 en-suite)



Parenting for faith

**Half Term week 28 October – 1 November
(Mon–Fri) BRF Ministries Anna Hawken**

We all want to help our children to meet and know God but in the busyness of everyday life sometimes it can feel like one more thing to squeeze in. During the week we'll explore five practical tools that you can use as a natural and normal part of your everyday life without having to find more time or energy. Come ready to think about how you learn, grow and connect with God and how to co-journey alongside your children or teenagers to help them to do the same. Anna is the Parenting for Faith Ministry Lead at BRF Ministries. A children's and youth programme will run alongside this week.

Code 45A £380 (£480 en-suite)

Walking with Moses

**28 Oct – 1 November (Mon–Fri)
Mark Ireland**

Inspired by opportunities to enjoy our beautiful surroundings, we shall reflect together on Moses' journey from Egypt to the Promised Land. We will explore the different ways God guides Moses in the wilderness and learn how we can discover God's guidance in our own journey through life. Mark is Archdeacon of Blackburn and a former vicar and diocesan missionary and has spent time trekking in the Sinai desert.

Code 45B £380 (£480)

NOVEMBER

Renew, Refresh, Resource

1–3 November (Fri–Sun) Lee Abbey Team

Please see RRR 25–27 October for more details.

Code 46A £170 (£220 en-suite)

Waiting for our heart's desire: writer's retreat

1–3 November (Fri–Sun) Ruth Leigh

The Bible is full of stories of impatient people asking God 'When?' It's a question many of us have fired at him. Waiting to see the yearnings of our heart come to be can test our patience. But his timing is always perfect even though we are not always able to see it. With a blend of anecdotes, testimony, writing exercises and humour, we'll look at how God can break into our lives and give us our heart's desire, and how it is never too late.

Code 46B £170 (£220 en-suite)



7–10 November – House closed to guests

Walking in his steps

11–15 November (Mon–Fri)

LICC

Imagine walking in the footsteps of Jesus' disciples, with a mission to make disciples, just as he did. This is the call of Jesus, but many of us haven't had the experience of either being discipled or discipling others in this way. Join us for a week-long journey with the dedicated team from LICC. Rediscover what it means to be a whole-life disciple of Jesus and how this can transform us and the world around us. This week is suitable for everyone, and especially those in any position of leadership in the church.

Code 49A

£340 (£440 en-suite)

Book of blessings

11–15 November (Mon–Fri)

Val and Mark Turner

Anyone can work with God to bless others. It comes out of kindness and opens us up to the work of the Holy Spirit. Blessing touches someone's soul to draw out hidden fruit. It builds confidence, vision, opening righteous possibilities and transformation, releasing gifts that have been imprisoned. The deep desire to bless others has resurrection power that activates energy between being and becoming. We will explore how we can work with God in blessing and make creative reminders of blessings using simple calligraphy and constructing beautiful keepsakes using simple bookbinding. Limited to 16 places.

Code 49B

£340 (£440 en-suite)

Meet Ruby Linn – Deputy House Team Leader



Ruby, at 18 years old, is one of the younger Community members, but she takes on roles and responsibilities within the House Team which don't reflect her young age. She comes from Huddersfield, where she completed A levels, and joined community in October 2023. She had found out about Lee Abbey through an exhibition stand at the Big Church Festival and after a lot of prayer, she decided that

this would be the right move for her. She had become a Christian aged seven, and deeply values the support her family gave her in her faith she grew up. Whilst on a Summer camp last year, she received healing and a new direction for her life and now hopes to move into Youth Work in due course. 'I've gained a lot of experience on Community, not only in cleaning (really thoroughly!) but in leading and serving people. I've made strong friendships and new ways of communicating and handling sometimes challenging situations. I've come to Lee Abbey to discern in what capacity God wants me to do Youth work and what is next for my life.' We're delighted God has brought Ruby to us for this stage of her journey.

Living with loss 1 – at The Beacon

11–15 November (Mon–Fri)

Andrea Corrie and Linda Sewell

Have you been struggling since the death of your loved one? Come and join others who have also experienced bereavement on this supported retreat to help you find positive strategies to support you with your life-changing loss. Through a variety of activities, including led sessions, creative writing and quiet reflection, the territory of grief will be explored. Whatever the circumstances, there is always a glimmer of light displacing the darkness and we will share observations on how to find it. We will explore helpful tools that we can access and utilise. Through sharing as much or as little as you wish, this is a gentle retreat with a Christian perspective, sensitively led and suitable for any who have lost a loved one.

Code 49C £300 (£300 en-suite)
at The Beacon

TAG (Transform a generation) 15–19s Activity weekend

15–17 November (Fri–Sun) South West Youth Ministries and Lee Abbey Team

Come, gather with young people, students and youth leaders from across the South West to encounter God, hear from inspiring Christian leaders and learn how together we can put our faith into action, becoming pioneers of change. Accelerate your discipleship and leadership potential and be resourced to become an extraordinary follower of Jesus, transforming the world around you.

Code 50A

Book through swym.org.uk/tag/



Notes from a good place

18–22 November (Mon–Fri)

Dave Hopwood and Simeon Wood

Dave and Simeon have been friends since they first met in the early 1990s. They share a passion for communicating the Christian story in creative and engaging ways. If you want to be excited by the Bible, enthralled once again by the Father's love, and be amazed by stories of faith, then this week is for you! Our lives can be full of notes – music and tales which express who we are and the wonders and struggles we face each day. Dave and Simeon will draw us into their stories, and invite us to share our own.
Code 51A £340 (£440 en-suite)

Associate Community weekend

22–24 November (Fri–Sun)

Lee Abbey Team

An annual weekend for our Associate Community, to celebrate and say a huge Thank You! to this wonderful team who support Lee Abbey through the year. For information about the Associate Community see page 18.
Code 52A

*Room perfect!
Spotlessly clean
and a gorgeous view.*

Watching, waiting, hoping – Silent Retreat

25–29 November (Mon–Fri)

Bishop Emma Ineson

This silent retreat for Advent will help us to focus on God for the season ahead, allowing him to reveal his deepest hopes and dreams for our lives, and leading us to that place where we can bring all our longings to the One who holds the future in his hands.
Code 53A £415 (£515 en-suite)

Creativity weekend

29 November – 1 December (Fri–Sun)

Lee Abbey Team

During Advent we're poised between 'now' and 'not yet'. It's an in-between time of waiting expectantly for the coming of Jesus at Christmas and into our world again. Perhaps we wait more attentively if we're also designing, creating and making. Come and keep fingers and minds busy with crafts, stitching and festive foliage. We'll create gifts and decorations and prepare our hearts to receive Jesus again. Materials will be supplied for a variety of projects.
Code 54A £170 (£220 en-suite)



DECEMBER

2–22 December – House closed to guests

Christmas celebration

23–28 December (Mon–Sat)

Lee Abbey Team

Join us for our Christmas celebration of Christ the King. Over this week we will retell the events of the very first Christmas, allowing time to reflect and respond to the call of Christ in our own lives. Join us for fun, festivities and deeply nourishing spiritual food for the journey of life.

Code 56A **£575 (£700 en-suite)**

New Year celebration: Gospel confidence

30 December – 3 January (Mon–Fri)

Simon Guillebaud

At a time when people are often anxious and fearful, and many believers seem to be on the back foot, we'll consider what a glorious liberating message we have to share, and how we should be confident, on the front foot, and bold in sharing the best news in the world. Welcome in the New Year inspired and invigorated in this week of celebration for all ages.

Code 58A **£460 (£560 en-suite)**

3–19 January – House closed to guests

JANUARY

The treasures of the kingdom Silent Retreat

20–24 January (Mon–Fri) **Michael Mitton**

Jesus said that God's kingdom is like a treasure hidden in a field for years and then is accidentally found (Matthew 13:44). Michael investigates what some of these treasures might be and how we might find them. Looking at the precious Treasure of Wisdom, the mysterious Treasure of the Dark, and the transformational Treasure of the Heart, Michael shares insights from Scripture, everyday experiences, and stories from the early church in Ireland and Britain. The retreat will be in silence from Monday night to Thursday afternoon.

63A **£340 (£440 en-suite)**

Living yarns

20–24 January (Mon–Fri) **Gretel White
and Vittoria Hancock**

Join Vittoria, Gretel and the team at Lee Abbey as we consider how the threads of our life weave together. Alongside space for you to knit or crochet, there are two short talks each day drawing on stories from the Bible and other Christian sources of inspiration. We will explore how we live out our faith with time for thinking and discussion with opportunity to learn new skills in the two projects offered by Vittoria and Gretel. Or bring your own projects to work on in a welcoming, friendly and prayerful environment.

63B **£415 (£515 en-suite)**

"To stay in such wonderful surroundings with unbelievable views, full board, plus a programme and speakers for the price charged was amazing!"

Renew, Refresh, Resource

24–26 January (Mon–Fri)

Lee Abbey Team

Our 'Renew, Refresh, Resource' weekends are designed for everyone; Christian or still exploring. Whether on your own or with your whole community, come to encounter Jesus Christ and be transformed in every area of your life. Through worship, teaching, prayer and the simple hospitality of our Community, step aside and find the space you need.

64A £170 (£220 en-suite)

Praying with St Paul

27–31 Jan (Mon– Fri) Graham Archer

St Paul frequently gives us examples of how he prays and what he prays for. We will learn from his rich insights in our times together, to inspire our own prayer journey. From the highs of Ephesian thanksgiving, to the lows of Corinthian despair, we find in his writing resonance with our own aspirations and struggles in talking with our heavenly Father. This is not a time to sit feeling hopeless in prayer – rather it is a season of opportunity to be grasped in a spirit of mutual encouragement. As Paul himself wrote 'I pray that ... Christ may dwell in your hearts through faith.'

65A £340 (£440 en suite)

Renew, Refresh, Resource

31 January – 2 February

Lee Abbey Team

Please see RRR 24–26 January for more details.

65A £170 (£220 en-suite)



FEBRUARY

Changed from glory into glory

3–7 February (Mon–Fri) David Rowe

What is God's purpose for our lives? As we navigate our way through this tumultuous life, what is the end to which we are called and how are we to prepare for it? Can we be too heavenly minded that we are no earthly use or are we too earthly minded that we have no heavenly hope? What is the place of suffering in our journey and how does God travel alongside us to bring us finally to glory. Reflecting on narratives of Bible characters and in wider literature we will see how we can change from glory into glory

67A £340 (£440 en-suite)

Painting prophetically in worship

3–7 February (Mon–Fri) Chris Duffett

Join Chris Duffett for an immersive retreat soaked with prophetic art seeking to hear from God and interpreting what you hear into paintings. Learn how to paint 'live' in worship and bring pictures, symbols and words from God's heart to those around you. This is a practical retreat with an emphasis on practicing and producing paintings. Please do bring painting materials and essentially an easel with you. Canvases will be provided.

67B £365 (£465 en-suite)

Individually guided silent retreat

10–14 February (Mon–Fri)

This individually guided retreat provides a wonderful opportunity to spend time alone and face-to-face with God. On each day of this SILENT IGR there will be a Holy Communion service in the Chapel and a short reflective talk, plus a one-to-one meeting with your allocated Spiritual Director for up to an hour. The rest of the day is yours to enjoy in silence with God, walk, pray, eat, be ...

Please note that retreatants will be invited to be in silence from Monday evening until Thursday afternoon.

69A £415 (£515 en-suite)



Love your local church: Ephesian adventures

17–21 February (Mon–Fri)

Richard & Nicola Moy

Love your church like Jesus does and find perspective, healing, forgiveness, hope and vision along the way. Find out what Paul endured to love the Ephesian church and how you can be filled with the length height and breadth of Christ's love, find freedom from pain and renew your vision of God's great plan – the hope for the world. With stories of churches from around the world to inspire and encourage we'll gain a fresh perspective on an ancient truth.

71A **£340 (£440 en-suite)**

Estate Working Party: tree planting

17–21 February (Mon–Fri)

Lee Abbey Estate Team

Come and create some history by planting the first new woodland at Lee Abbey for fifty years. Working on steep slopes and uneven ground, we're planting 1200 native trees to increase our Atlantic Rain Forest. (You won't have to dig the holes!) A reduced rate for roughly 5 hours work each day with late afternoons and evenings free for well-earned rest. If you are unsure whether you could manage this work, please phone before booking. Bring outdoor clothing, suitable footwear and waterproofs.

71B **£260 (£360 en-suite)**

24–28 February – House closed to guests

Renew, Refresh, Resource

28 February – 2 March (Fri – Sun)

Lee Abbey Team

Our 'Renew, Refresh, Resource' weekends are designed for everyone; Christian or still exploring. Whether on your own or with your whole community, come to encounter Jesus Christ and be transformed in every area of your life. Through worship, teaching, prayer and the simple hospitality of our Community, step aside and find the space you need.

74A **£170 (£220 en-suite)**

MARCH

How does the kingdom of God grow?

3–7 March (Mon–Fri)

Ian Paul

Talk about 'church growth' and 'outreach' and 'evangelism' can put a lot of faithful Christians off. Yet another thing we are supposed to do and which we feel guilty about! But Jesus' teaching is striking in that he doesn't focus on us. Instead, he talks about the nature of the kingdom of God and the character of God himself. We will explore the surprising, refreshing, and encouraging teaching of Jesus – the kingdom grows just as seeds do when planted well, and it is both a bit of a mystery and something wonderful to see!

75A **£380 (£480 en-suite)**



New life in Christ

3–7 March (Mon–Fri) Amy Boucher–Pye

The apostle Paul experienced a complete turnabout on the Damascus Road. How can we emulate him in ‘putting on Christ’ – that is, how do we leave our old selves behind as we take on the new? We’ll explore some of the rich wisdom of Paul’s letter to the Colossians with plenty of time to engage in prayer exercises to encounter God. Feel refreshed, challenged and equipped to live each new day with Jesus.

75B £380 (£480 en-suite)

Renew, Refresh, Resource

7–9 March (Fri – Sun)

Lee Abbey Team

Our ‘Renew, Refresh, Resource’ weekends are designed for everyone; Christian or still exploring. Whether on your own or with your whole community, come to encounter Jesus Christ and be transformed in every area of your life. Through worship, teaching, prayer and the simple hospitality of our Community, step aside and find the space you need.

76A £190 (£240 en-suite)

Local Churches evening

9 March (Sun)

An opportunity for local congregations of all sizes, to gather as one with the Lee Abbey Community in this beautiful place to praise God, be encouraged and pray for our own settings where we are planted. 5.45 – 8.30pm beginning with tea.

100A FOC

10–14 March – House closed to guests

Renew, Refresh, Resource

14–16 March (Fri–Sun) Lee Abbey Team

Please see RRR 7–9 March for more details.

Code 78A £190 (£240 en-suite)

Lake of tears revisited

17–21 March (Mon–Fri) Kelvin Burke

During the week we will delve deeper into the ‘witness’ of God. The age-old question – ‘Where is God when there is suffering?’ is answered resoundingly by the vision of the Lake of Tears. Eight months in hospital following a paralysing spinal injury and 18 years as a Healthcare Chaplain contributes to Kelvin’s narrative of God, our ever-present helper. Through Scripture, reflection and well-told story, this retreat will help you encounter the one who is ‘with you always.’

79A £380 (£480 en-suite)

The Jewish Gospel? Meeting God in Matthew

17–21 March (Mon–Fri) Elaine Storkey

How much do you know about the Gospel that opens the New Testament? Nothing that Matthew writes is there by accident, and we’ll be looking carefully at Matthew’s use of prophecy and Old Testament narratives. We’ll ask who Matthew was, and who he was writing for. We’ll look at some of the overlaps with the other three accounts, and at the great significance of those parts of the Gospel that are unique to Matthew. Most of all, we will ask God to speak to us through Matthew so that we can share his deep understanding of the life, the love, the person and the power of Jesus.

79B £380 (£480 en-suite)

30 problems for atheists: and a few more

17–21 March (Mon–Fri) Alan Storkey

Atheism needs examining, both in what it claims and what it rejects. With their writings in mind, this seminar looks at a series of problems past and current which atheists have in cosmology, the sciences, meaning of life, thinking, and in their personal outlook. It's interesting that several high-profile atheists have changed their minds towards the end of life, and seem open to recognising, at least, that the world has a Creator. We'll be sharing our own experiences of getting into fruitful conversations.

79C £380 (£480 en-suite)

Renew, Refresh, Resource

21–23 March (Fri–Sun) Lee Abbey Team

Please see RRR 7–9 March for more details.

80A £190 (£240 en-suite)

Making a world of difference

24–28 March (Mon–Fri)

Dave & Anne Bookless

In an age of intractable wars, climate chaos, and biodiversity collapse it's easy to give in to despair or escapism. Yet, we're called to seek God's Kingdom on earth as in heaven. With 30 years of experience in urban London and around the world, Dave and Anne Bookless will share biblical wisdom and practical stories inspiring us to make a world of difference. We pray you'll leave refreshed, with a deeper love for the place God has planted you, and a vision of a future and a hope for God's world.

81A £380 (£480 en-suite)

"What amazing, servant-hearted Community! We have felt rested and refreshed."



Come. Be. Go.

24–28 March (Mon–Fri) Keith Foster

As those called to be Christ's ambassadors representing him within the spheres of influence he has placed us, we need first to spend time with him. These sessions will consider finding the balance between self-care and being ministers of reconciliation. How am I connecting with Jesus in my day to day? Whose mission is it? What do my disciple making spaces look like? We'll be encouraged in our daily connection with Christ yet spurred on in our ministry as we take our place in his body.

81B £380 (£480 en-suite)

Renew, Refresh, Resource

28–30 March (Fri–Sun) Lee Abbey Team

Our 'Renew, Refresh, Resource' weekends are designed for everyone; Christian or still exploring. Whether on your own or with your whole community, come to encounter Jesus Christ and be transformed in every area of your life. Through worship, teaching, prayer and the simple hospitality of our Community, step aside and find the space you need.

82A £190 (£240 en-suite)

Keeping in step with the Spirit

**31 March – 4 April (Mon–Fri)
Paul and Becky Harcourt**

We all experience a variety of pressures: constant or sudden change, relationship difficulties, the demands and expectations of others, and even our own self-expectation. We long to live freely and lightly yet it can seem impossible. Together we will explore our responses to pressure and how to develop godly resilience in order to live more consistently in God's rhythms of grace.

83A £380 (£480 en-suite)

The unforced rhythms of grace

**31 March – 4 April (Mon–Fri)
Bev Shepherd**

We all experience a variety of pressures: constant or sudden change, relationship difficulties, the demands and expectations of others, and even our own self-expectation. We long to live freely and lightly yet it can seem impossible. Together we will explore our responses to pressure and how to develop godly resilience in order to live more consistently in God's rhythms of grace.

83B £380 (£480 en-suite)



APRIL

Renew, Refresh, Resource

4–6 April (Fri–Sun) Lee Abbey Team

Please see RRR 28–30 March for more details.

80A £190 (£240 en-suite)

Ministers in training retreat

7–11 April (Mon–Fri)

John and James Harding

Brothers James and John Harding form a powerful partnership with their wide experience of both theological study and pioneer ministry. As they co-lead this stimulating retreat, we'll glean from their combination of deep theological study in the book of Revelation, coupled with wide experience in forming young leaders and pioneering church plants at home and abroad. Together, we'll explore our Gospel-inspired reflexes of love, in leadership, ministry and mission, all viewed in the light of apocalyptic moments where Heaven and Earth touch. Prepare to be rocket-fuelled for your ministry!

Special price 85A £190 (£290 en-suite)

From Bethany to Jerusalem

11–15 April (Fri–Tue)

Rupert and Sally Martin

From his home base in Bethany where he felt loved and supported in the family life of Mary, Martha and Lazarus, Jesus sets out on the perilous final journey to Jerusalem. In Bethany Jesus performs the last of the seven signs in John's Gospel; the raising of Lazarus – foretelling Jesus' own Resurrection – and utters the last of the 'I AM' statements. In Jerusalem Jesus confronts the powers that be, but never stops teaching, healing, fearlessly true to his calling.

In the lead up to Easter we'll explore the significance of Bethany and Jerusalem and follow Jesus on the journey between.

86A £380 (£480 en-suite)

"He led me to a quiet place to be still and stay with him."



The beauty of the cross Clay retreat

11–15 April (Fri–Tue) Janey Petterson

A little teaching, a lot of listening and reflection and quite a bit of making in air dry clay, over three days, we'll look at Strongholds, Sacrifice and Security – considering why Jesus had to come, what he did on the Cross and the security we have in him. Absolutely no previous clay experience necessary – and open to all stages of belief or doubt.

86B £405 (£505 en-suite)

He is Risen! EASTER CELEBRATION

16–21 April (Wed–Mon) Lee Abbey Team

Join with the Lee Abbey Community as we follow Jesus on his journey from Gethsemane to Golgotha and on to the glorious dawn of Resurrection Sunday. A creative programme designed to give us space to take in the momentous events, join together in celebration and be renewed in hope. Suitable for all ages and stages of life and faith.

87A £475 (£600 en-suite)



The call of the wild – the feel of the Holy

Pilgrimage at Lee Abbey

21–25 April (Mon–Fri)

Michael Mitton & Russ Parker

Russ and Michael have been leading pilgrimages in Ireland, the British Isles and Assisi for over thirteen years. Following the success of their pilgrimage based at Lee Abbey in 2024, they will be returning for another week. During this week participants will be going on pilgrimage using the landscape of Lee Abbey including Shoreline, Forest and High Place. Rooted in a rhythm of worship, there will be teaching, reflection, conversation and encounter.

88A £380 (£480 en-suite)

Renew, Refresh, Resource

25–27 April (Fri – Sun) Lee Abbey Team

Our 'Renew, Refresh, Resource' weekends are designed for everyone; Christian or still exploring. Whether on your own or with your whole community, come to encounter Jesus Christ and be transformed in every area of your life. Through worship, teaching, prayer and the simple hospitality of our Community, step aside and find the space you need.

89A £190 (£240 en-suite)

28 April – 1 May – House closed to guests

↳ **Visit the Lee Abbey Tea Cottage
– open May to October**

MAY

Renew, Refresh, Resource

2–4 May (Fri – Sun) Lee Abbey Team

Please see RRR 25–27 April for more details.

1A £190 (£240 en-suite)

Walk and Talk

5–9 May (Mon–Fri)

Helen & Graham Worsfold and team

Come and join us to walk in this glorious part of Devon. Daily walks in a variety of areas will cover the stunningly dramatic coastline, river valleys and moors of Exmoor. We'll begin the day with a short time of prayer and worship, followed by a choice of three walks: long (9–12 miles), medium (6–8 miles) and short (4–5 miles). The geography of this beautiful landscape means most walks will have some steep ascent and descent. Bring good walking footwear, appropriate clothing, rain gear and a small rucksack and water bottle for your packed lunch. We may need to share lifts to reach the walk start and end points.

2A £455 (£555 en-suite)

Enneagram 1

5–9 May (Mon–Fri)

Catherine Park & Joanna Pearson

Enneagram (Greek for '9 Points') describes nine personalities. The Enneagram helps us to look at ourselves honestly, safe in the love of God, to see why we think or act in a particular way. It is a powerful tool for spiritual and personal growth. This course is limited to 18 places.

2B £455 (£555 en-suite)

Renew, Refresh, Resource

9–11 May (Fri – Sun) Lee Abbey Team

Please see RRR 25–27 April for more details.

3A £190 (£240 en-suite)

12–18 May – House closed to guests

Honesty over silence

19–23 May (Mon–Fri)

Patrick Regan

An opportunity to open up conversations around topics many of us find difficult, such as Trusting God in times of uncertainty, struggles with Identity, times of anxiety and seasons of thankfulness. With characteristic warmth and empathy, Patrick examines the strength in letting go of our need to be in control. He'll help us explore how we can stop comparing ourselves to others and instead live authentically and honestly, growing into the people God has created us to be.

7A £380 (£480 en-suite)

Birds of Exmoor

19–23 May (Mon–Fri)

Andrew Mann

Lee Abbey lies in the spectacular and dramatic coastal landscape of Exmoor with its stunning scenery and wonderful wildlife. Its variety of habitats – sea cliffs, moorlands, meadows, woodlands and rivers – are home to species such as Peregrine Falcons, Redstarts, Pied Flycatchers, Razorbills and Guillemots to name a few. We will spend our days looking and listening out for these and more. PLEASE NOTE: A good basic level of fitness is required as there will be 1–2 miles of walking involved, including some stiles to reach the birds. Limited to 13 places.



7B £455 (£555 en-suite)

Renew, Refresh, Resource

23–25 May (Fri–Sun)

Lee Abbey Team

Please see RRR 25–27 April for more details.

8A £190 (£240 en-suite)

Following Jesus with Mary

26–30 May (Mon–Fri)

Helen Collins

Protestants are often guilty of ignoring or overlooking Mary within their Christian faith and aren't really sure what to do with her other than at Christmas. However, Mary's life of Spirit-filled faithfulness has much to teach the contemporary church about what it means to love and follow Jesus. We will be examining the stories about Mary within scripture to see what she has to teach us, and we will be relating these insights to a range of contemporary issues.

9A

£380 (£480 en-suite)

Renew, Refresh, Resource

30 May – 1 June (Fri–Sun) Lee Abbey Team

Our 'Renew, Refresh, Resource' weekends are designed for everyone; Christian or still exploring. Whether on your own or with your whole community, come to encounter Jesus Christ and be transformed in every area of your life. Through worship, teaching, prayer and the simple hospitality of our Community, step aside and find the space you need.

10A

£190 (£240 en-suite)

JUNE

The in-between time SILENT RETREAT

2–6 June (Mon–Fri)

Margaret Warne

In the liminal space between Ascension and Pentecost, we will wait with the disciples as they leave their old world behind and stand on the threshold of the unknown. We will learn with them, reliving encounters with Jesus in Gospel stories and exploring biblical images of the Holy Spirit. In this silent retreat, we will use creative and ancient forms of prayer, such as imaginative contemplation, praying

with art and Lectio Divina, as we watch for the newness God will bring about in the space.

11A

£455 (£550 en-suite)

Estate Working Party

2–6 June (Mon–Fri)

Lee Abbey Estate Team

If you're fit and able, we'd love you to join our team doing practical tasks on our stunning estate this week. You'll work roughly five hours each day but get a reduced rate along with the late afternoons and evenings free for a satisfying rest. Choose between: woodland work, fences and estate tasks, log splitting and clearing and gardening. Places on each stream are limited. Appropriate outdoor PPE is provided, but please bring suitable clothing, stout footwear and waterproofs. If you are unsure whether you could manage this sort of work, please phone before booking.

11B

£280 (£380 en-suite)

Renew, Refresh, Resource

6–8 June (Fri–Sun)

Lee Abbey Team

Please see RRR 23–25 May for more details.

12A

£190 (£240 en-suite)

9–12 June – House closed to guests

Renew, Refresh, Resource

13–15 June (Fri–Sun)

Lee Abbey Team

Please see RRR 23–25 May for more details.

14A

£190 (£240 en-suite)

"The food was incredible! Nothing was too much trouble in catering for my diet."



Faith in four dimensions

16–20 June (Mon–Fri)

Mark and Jonathan Tanner

Jesus commands us to love the Lord with all our heart, soul, mind, and strength, and to love our neighbours as ourselves. This key unlocks so many treasures, about the Kingdom, about leadership, about discipleship, about ourselves, and about daily living. Each day we'll get beneath the surface of this Great Commandment and engage in the everyday task of faithfulness, fruitfulness, and flourishing as we follow Christ in our daily living.

15A

£380 (£480 en-suite)

Birds of Exmoor

16–20 June (Mon–Fri)

Andrew Mann

Lee Abbey lies in the spectacular and dramatic coastal landscape of Exmoor with its stunning scenery and wonderful wildlife. Its variety of habitats – sea cliffs, moorlands, meadows, woodlands and rivers – are home to species such as Peregrine Falcons, Redstarts, Pied Flycatchers, Razorbills and Guillemots to name just a few. We will spend some time looking and listening out for these and more.

PLEASE NOTE: A good basic level of fitness is required as there will be 1–2 miles of walking involved, including some stiles, to reach the birds. Limited to 13 places.

15B

£455 (£555 en-suite)

Renew, Refresh, Resource

20–22 June (Fri–Sun)

Lee Abbey Team

Please see RRR 23–25 May for more details.

16A

£190 (£240 en-suite)

Holiday for the soul

23–27 June (Mon–Fri)

Brian Draper

A Summer retreat to help us switch off and switch back on to God. The writer Anne Lamott once said, 'Almost anything works again if you switch it off for a few minutes ... including you.' And summer's a season to put a smile on even the most weary of faces, so we'll pause for breath, and turn our face again toward God's radiant Life-Light. We'll welcome the long, light days of high summer, step out into the fresh air and dive into the immersive qualities of life in God's sensuous kingdom.

17A

£380 (£480 en-suite)

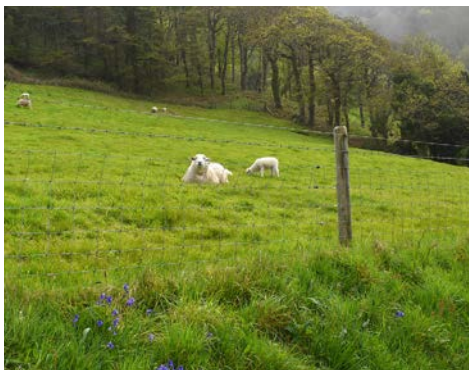
Hide and seek: the desire for play and wonder

30 June – 4 July (Mon–Fri) Andy Flanagan

In a functional, utilitarian world, our natural desire to play and our desire for beauty can be buried under the mound of worthy things we could be doing. Have we lost something of the childlike wonder in our relationship to God? How could that be rekindled? Could we mature into play? Where have our wounds made the freedom to explore difficult? Where have our responsibilities dampened our joy in the unexpected? Let us play.

19A

£380 (£480 en-suite)



Worshipping in Creation

At Lee Abbey the stunning natural environment is our auditorium of worship. We understand that worship shapes us – what we do and say and sing informs what we believe and how we live. As a Community we are learning how to live simply, loving our Creator God and sustaining his good creation. Worship is at the heart of this desire. And so, over the coming year, we are going to be taking our collective worship outside more often. When you visit this year look out for the times we'll be getting outside to pray and praise – it might even involve singing in the rain!

Tom Collins, Chaplain



God's Creation in our care

This beautiful corner of Exmoor delights all our visitors and guests. The breathtaking beauty is captivating and through it, the Estate team aims to allow everyone who comes to Lee Abbey to experience the wonder and greatness of God's creation. From the way we manage our Atlantic woodland with its rare plants and lichens to the way we care for our livestock, we are deeply aware that God is at the heart of his creation and our stewardship of it is part of our worship.

Our farm produces much of the meat we serve at Lee Abbey. Meat production retains and maintains the ancient pasture landscape which in turn supports a wide variety of wildflowers and insects to feed our beloved House Martins. We breed Lleyn sheep and rare Devon Closewools. We also raise North Devon suckler cattle producing beef as well as a few rare breed pigs. Our meat travels just 10 food miles before it gets to your plate! River water rushing to the sea powers the hydroelectric pump producing 50% of our electricity in the winter months. Soon our new barn roof solar panels will supply a significant proportion of our summer needs too.

We aim to use the estate to demonstrate how it is possible to work in a sustainable way in all we do. The importance of where our food comes from is often lost today, so we like to help with the reconnect. We pray that through this beautiful estate, all will wonder at God's bountiful provision and delight in his creation.

*Simon Gibson, Farm Manager
Corinne de Klerk, Ecological Officer*



Getting to Lee Abbey

By car: Use our postcode EX35 6JJ on your satnav and set it to direct you **via Lynton**. This will avoid going via Woody Bay and using the very narrow, single-track road from there to Lee Abbey!

- We have 2 electric car charging points on site. There is a charge for their use.

By public transport: Note the information on the map above.

Taunton taxi: On arrival and departure days of all published conferences, Lee Abbey offers a discounted taxi service from Taunton coach stop and railway station. Collections are at 3.40pm and 4.00pm respectively on Mondays and Fridays. The taxi returns to Taunton by 11.30am on Friday mornings, and by 4.30pm on Sunday afternoons.

This service must be pre-booked and paid for before your arrival date. If you are delayed for any reason, you will need to make your own arrangements to get to Lee Abbey. We are sorry, but no refund can be made.

Please see our website for more information.

Meeting the taxi

Arriving by rail – Please wait in the special assistance lounge on Platform 2 for the driver to collect you.

Arriving by coach – Please wait by the Castle Way Bus Shelter, Taunton TA1 4AH (opposite The Cosy Club).

Cost – The taxi costs £28.00 each way and the price includes either 1 suitcase or 1 holdall per person. If bringing extra luggage, a guide dog or a wheelchair, please let the Bookings Team know in advance as this may incur an extra charge.

Important information

For other important information such as bookings, payments, cancellations and 'terms and conditions', please visit our website:

leeabbeydevon.org.uk

This product is made of material from well-managed, FSC®-certified forests and other sources.



Some photographs in this brochure are by: Chris Dobson photography, James Doney photography, Alfredo Gangemi, Gill Lewis, Carl Smethurst, Justin Watkins and Jane Willis
Design: sarahpricedesign.co.uk

To book: leeabbeydevon.org.uk 01598 752621

The Beacon Activity Centre

The Beacon is an outdoor activity centre for school and youth groups, families and retreats.

We can accommodate groups of up to 44 people and provide a bespoke programme of exciting activities, good food and the beautiful backdrop of Exmoor National Park.



Lee Abbey Camps

For over 60 years Lee Abbey has run summer camps on the field next to the beach.

The summer camps are in a stunning location and provide an environment in which you can discuss your faith, explore God's great love, meet new people, ask questions, explore issues and have a huge amount of fun!

The Field (ages 18–30)

leeabbeydevon.org.uk/visit/camps/thefield

Lee Abbey Youth Camp (ages 12–17)

leeabbeydevon.org.uk/visit/camps/layc





Lynton, North Devon, EX35 6JJ


Tel: 01598 752621

leeabbeydevon.org.uk



 @leeabbeydevon

 @leeabbeydevon

 @lee_abbey_devon